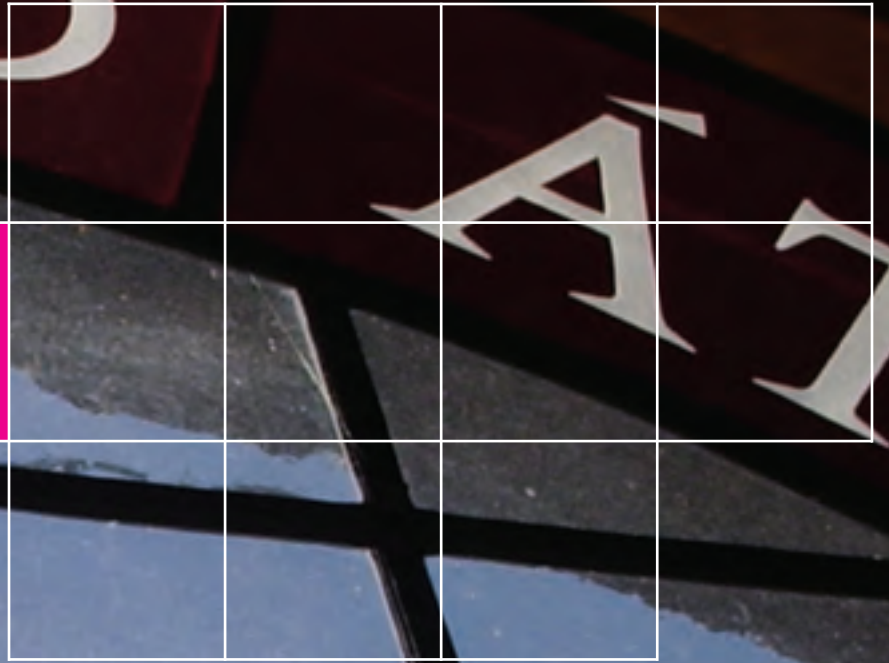
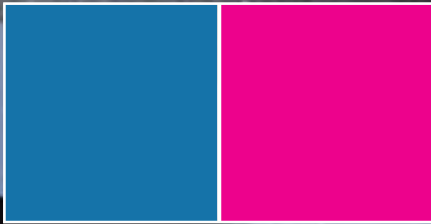


DROICHT



us pp

1.0 Introduction



1.0 Introduction

1.1 Strategy Background

This Strategy was commissioned by Drogheda Borough Council, Louth County Council and Meath County Council to establish a cohesive and interlinked Strategy for the Greater Drogheda Area for the period to 2024.

The Strategy provides a framework within which the future planning of the area will take place. It will inform the content and implementation of present and future statutory plans.

The Strategy draws on guidance from the National Spatial Strategy and from Regional Planning Guidelines and sets out how national and regional policy will be implemented at the local level.

1.2 Strategy Aim

The Strategy provides a framework for the future spatial, social, environmental and economic development of the Study Area. It is intended to achieve the following objectives:

- To provide for a prosperous and vibrant town centre at the heart of the Study Area.
- To identify aims and objectives and best practice for the phased expansion of future residential growth.
- To identify and focus on the delivery of economic investment.
- To report on the provision and best utilisation of services and infrastructure capacity.
- To identify and exploit the benefits from access to high frequency transport corridors (rail and road) linking the Study Area to Dublin in particular.
- To propose improvements to the transport network within the Study Area.
- To examine urban design opportunities.

1.3 Study Area

For the purpose of the Strategy, the overall Study Area has been defined as follows:

- **Core Study Area:** This equates to the entire area of Drogheda Borough Council; the northern environs of the town in Co. Louth for which a Local Area Plan has been prepared; and the southern environs of the town within County Meath which have been zoned and/or identified in hatching as having development potential (Bryanstown district) under the 2001 Meath County Development Plan (see Map 1.1). It also includes any current non-zoned lands in the immediate environs of

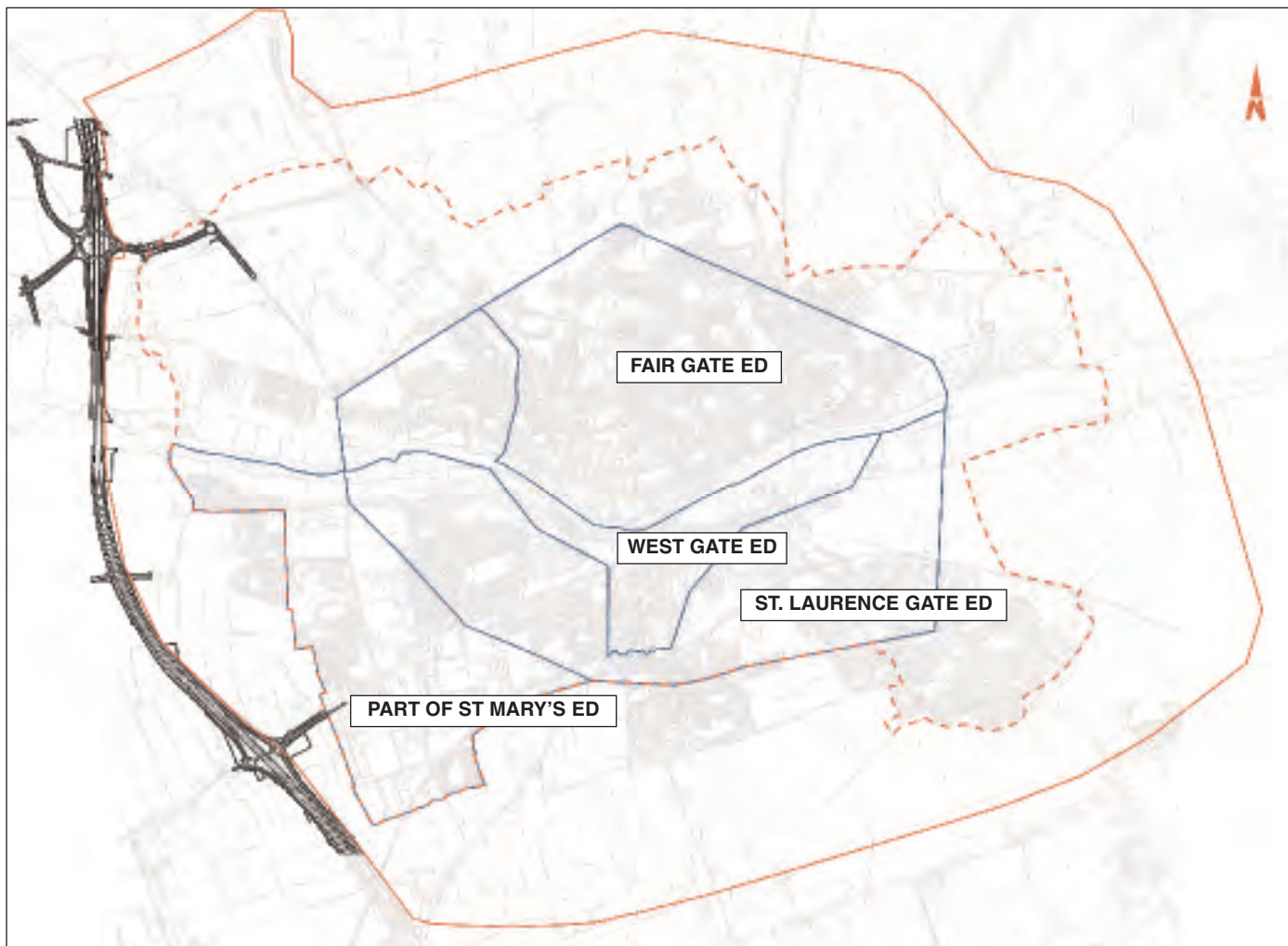
these lands. It comprises the area within the solid red line of Map 1.1. The population of the Core Study Area is approximately 31,000 persons (2002).




- **Immediate Area of Influence in East Meath:** This equates to the villages of Laytown, Bettystown, Donacarney, Mornington, Mornington (East) and Julianstown, i.e. roughly the area between the rivers Boyne and Nanny. This is the area that has the strongest link with Drogheda and equates to the 'East Meath Coastal Zone, Local Area Plan North' as described in the study brief.
- **Broader Area of Influence:** This equates to the remainder of villages in the hinterland area of Drogheda within Counties Meath and Louth. (See Map 1.2)



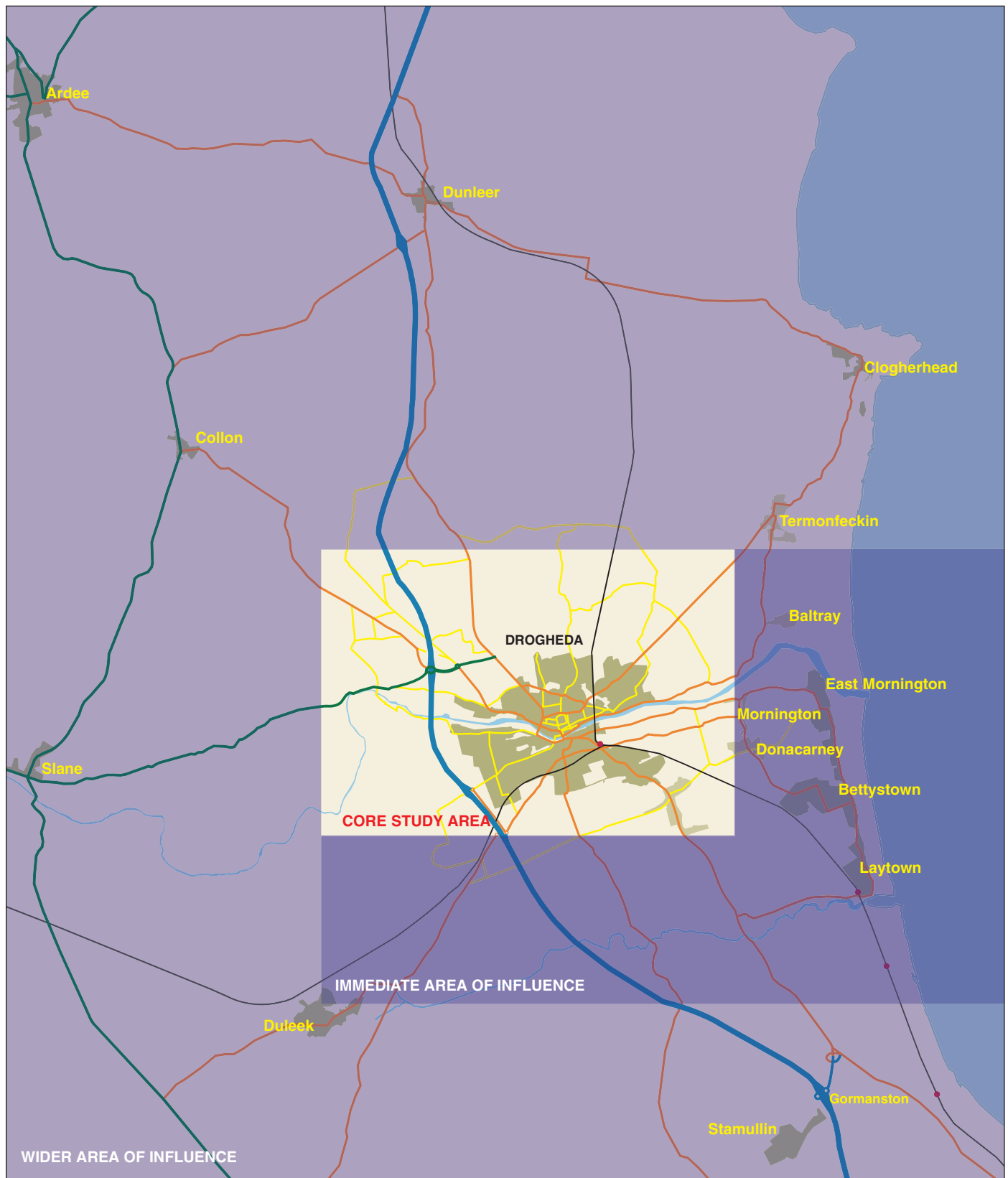
Boyne Cable Bridge





Legend	
	Core Study Area Boundary
	Drogheda Borough Council Boundary
	ED Boundaries

Map 1.1 Core Study Area



Map 1.2 Broader Area of Influence

1.4 Structure of Report

The Strategy comprises seven chapters.

- Chapter 2 provides a profile of the Study Area in terms of population, recent residential, retail and other commercial development, economic and employment issues, the zoned landbank, traffic and transport issues, infrastructure and heritage and amenity in the area.
- Chapter 3 outlines the overall policy context, in particular the national and regional planning guidance and the statutory planning context.
- In Chapter 4 the recommended Strategy is developed in terms of population estimates and growth projections. Further to this,
- Chapter 5 sets out the main principles of the Strategy.
- In Chapter 6 the detailed strategy recommendations are considered under the headings of Land Use, Transportation, Economic Development and Urban Design. A summary of the key elements is provided at the end of the Chapter.
- Finally, Chapter 7 outlines the strategy implementation mechanisms.

1.5 Consultation

As part of the overall development of the Strategy an extensive consultation process was undertaken. The process focused primarily on strategic stakeholders in the areas of Economics, Tourism, Transport and Land Use and Spatial Planning (including design).

The consultation process had a number of distinct phases as outlined below. Consultation Reports have been produced for the various stages of the project.

1. Stakeholder scoping.
2. Initial proactive engagement with stakeholders.
3. Preparation of stakeholder report to feed into the Issues Document.
4. Dissemination of Issues Paper.
5. Stakeholder meeting to discuss Issues Paper cross sectorally.
6. Preparation of newspaper notices advertising the Planning Strategy and requesting submissions.
7. Report on the output from stakeholder meeting and newspaper submissions to feed into Draft Planning Strategy.

1.6 Appendices

The appendices are set out in a separate document as Volume 2 of this report. They include supporting analysis and information concerning;

- Methodology adapted for the development of the Strategy.
- Stakeholder consultation.
- Population Projections.