



PROPOSED CARLINGFORD TO TEMPLETOWN GREENWAY

Public Consultation No.1



Comhairle Contae Lú
Louth County Council



An Roinn Iompair
Department of Transport





PROPOSED CARLINGFORD TO TEMPLETOWN GREENWAY

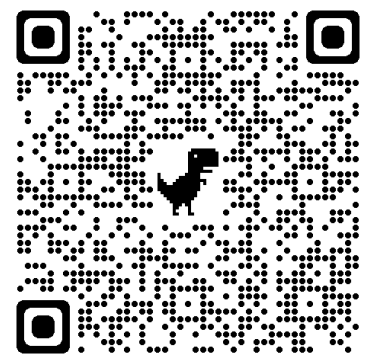
Introduction

Louth County Council (LCC) is proposing to develop a greenway from the village of Carlingford to Templetown Beach with links to the heritage village of Greenore as part of the proposed Great Eastern Greenway.

Public Consultation No.1

As part of Public Consultation 1 and in accordance with the TII's Code of Best Practice National and Regional Greenways, members of the public and interested parties are invited to participate in the public consultation phase. The purpose of this first public consultation is to present the Study Area and hear your feedback. We want to hear your views on the following:

- Need for the project
- Possible routes that should be considered
- Locations, attractions or facilities in your locality that could be attractive to Greenway users;
- Locations, attractions, or facilities in your locality that would benefit from a Greenway,
- Constraints or barriers to a Greenway in your area



Information on the project will be on display at:

Public Consultation 1 Venue	Dates	Times
Carlingford Heritage Centre, Church Rd. Carlingford	Thurs 23 rd June 2022	5pm to 7:30pm

The website provides details of the project study area and the questionnaire will provide you with an opportunity to have your say and to provide feedback to the project team. Closing date for submissions is the **08 August 2022**.

<https://www.louthcoco.ie/en/services/transportation-and-infrastructure/greenway-carlingford-to-templetown/>

Have Your Say

- **Email:** GreenwayCarlingfordTempletown@louthcoco.ie
- **Phone No:** 042 9335457
- **Online:** <https://forms.office.com/r/0FK1fVZ1Ed>



An Roinn Iompair
Department of Transport





PROPOSED CARLINGFORD TO TEMPLETOWN GREENWAY

Creating Opportunities for Rural Ireland

Public Consultation No.1

Who Can Get Involved?

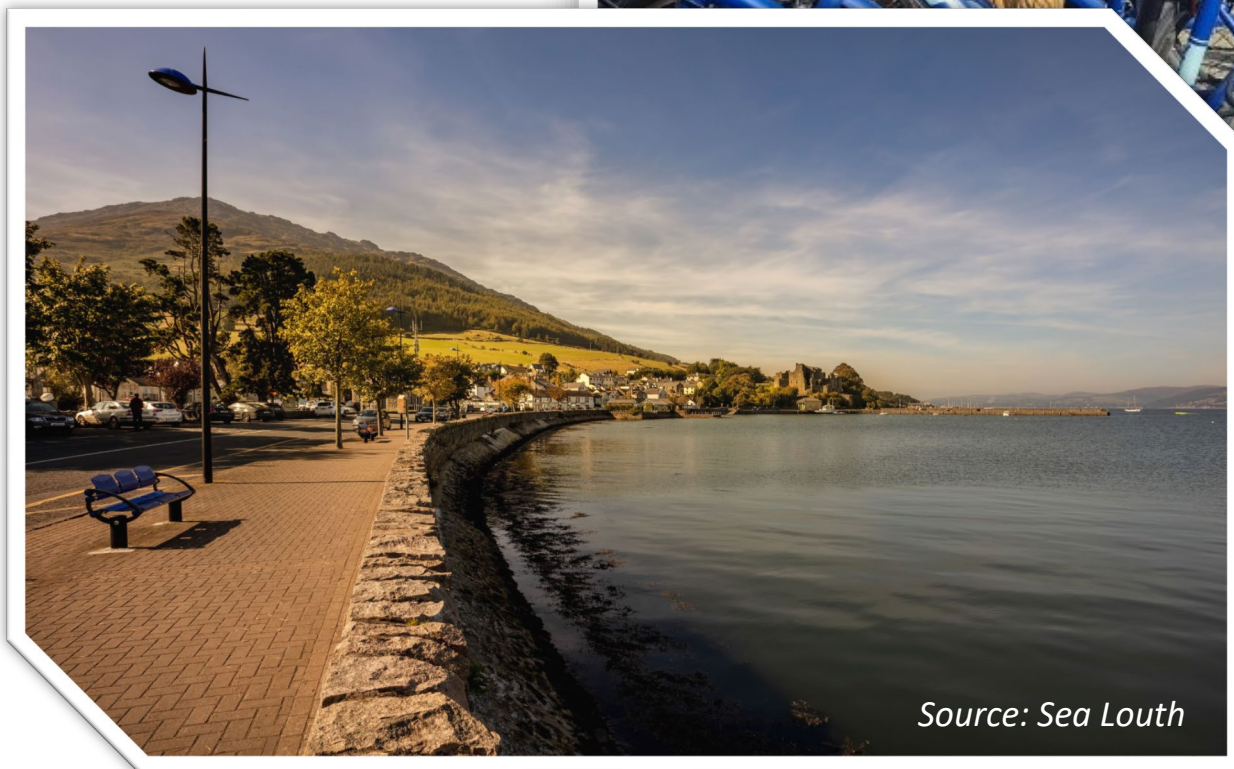
People who own land along the route, the farming community, local B&B's, hotels and hostels and camping sites all have an important role in its success.

Local shops, pubs and supply stores and Post Offices all stand to benefit from the opportunities that come with increased visitor numbers.

Community groups and interests are vital to the creation of new ideas and helping tourism information centres and services.



Source: Carlingford.ie



Source: Sea Louth



An Roinn Iompair
Department of Transport

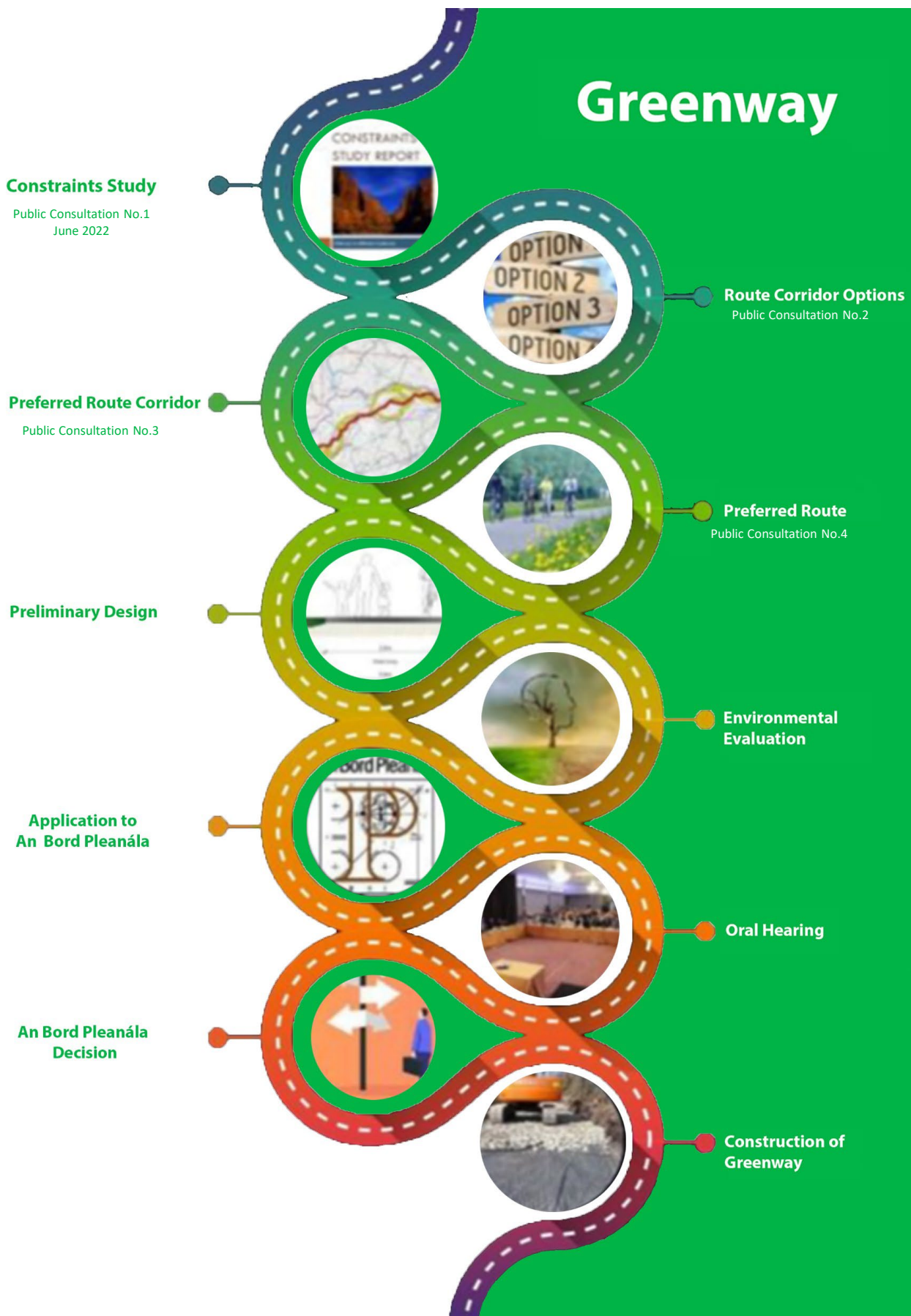




PROPOSED CARLINGFORD TO TEMPLETOWN GREENWAY

Greenway Process

Public Consultation No.1



New Government Guidelines mean that Public Consultation will be a vital element of this new project.

The Government's Strategy for the Development of National and Regional Greenways (2018) sets out the process that all projects must follow, before a route is selected and planning consent is sought from An Bord Pleanála.

Four stages of public consultation will be held on the new Carlingford to Templetown Greenway to inform the public and discuss the project before it is submitted to An Bord Pleanála.

Stages

Public Consultation 1
Study Area & Constraints
23rd June 2022

Public Consultation 2
Route Corridor Options

Public Consultation 3
Preferred Route Corridor

Public Consultation 4
Preferred Route Consultations with Individual Landowners



An Roinn Iompair
Department of Transport





PROPOSED CARLINGFORD TO TEMPLETOWN GREENWAY

Working With You

Public Consultation No.1

Working With You

We aim to route the cycleway through publicly owned lands, and avoid working farms, where practicable.

However, we do envisage that it will be necessary to build some of it on land that is now privately owned.

Where this is needed, we will work with the farmer to pick the least disruptive route possible, likely to be along the farm boundary.

A Project Liaison Officer (PLO) will be made available at the route corridor options stage. The PLO will liaise and engage with affected parties or their representatives on any matters relating to the Greenway scheme. A Project Agronomist / Property Advisor, will be made available to landowners to fully and fairly assess the impact of the proposed Greenway on their farms, business and other property types.

Where private land is needed for the cycleway, we will strive to purchase it through a voluntary agreement, if at all possible.

A Code of Best Practice for National and Regional Greenways new available at:

<https://www.gov.ie/en/publication/6b6a0-code-of-best-practice-for-national-and-regional-greenways>

Real and open engagement with the community will be central to everything we do.



An Roinn Iompair
Department of Transport





PROPOSED CARLINGFORD TO TEMPLETOWN GREENWAY

Project Objectives & Constraints

Public Consultation No.1

Objectives for developing the Carlingford to Templetown Greenway

- A key part to link Belfast to Dublin with a high-quality safe, climate friendly and mixed-use greenway;
- Promote cycling, walking and other non-motorised active travel in the area;
- Encourage more visitors to the Greenore and Templetown by linkages to the popular Carlingford area;
- Link Carlingford and Templetown to the Carlingford Lough Ferry.
- Maximise the value of natural amenity of Carlingford Lough / Dundalk Bay and develop a tourism experience that caters for a broad range of visitors;
- Facilitate regular access to visitor attractions and services along the corridor;
- In line with the Government’s five ‘S’ criteria – Scenic, Sustainable, Strategic, Segregated and Lots to See and Do, in conjunction with environmental, engineering and financial considerations.



Economy



Safety



Physical Activity



Environment



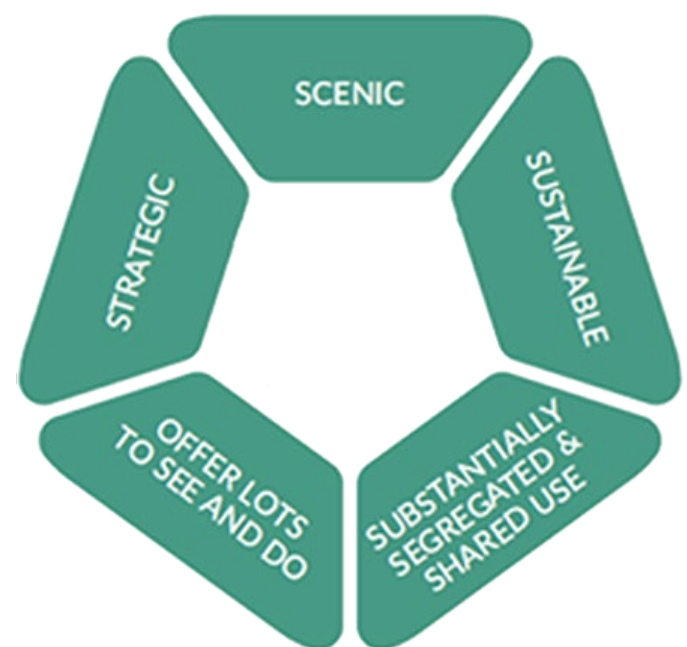
Accessibility/Inclusion



Integration

Constraints for developing the Carlingford to Templetown Greenway

- Community
- Carlingford Lough Special Protection Area (SPA) and Carlingford Shore Special Area of Conservation (SAC).
- Coastal and Fluvial Flooding & Erosion
- Heritage & Archaeology
- Existing infrastructure



An Roinn Iompair
Department of Transport





PROPOSED CARLINGFORD TO TEMPLETOWN GREENWAY



Feedback Form

Public Consultation No.1

1. **Name:** _____
(Optional)

Address: _____
(Optional)

Phone: _____
(Optional)

Email: _____
(Optional)

2. Do you live in the Study Area? Yes No

3. If you live / have property in the Study Area, is it:

Farm / Agricultural Land Residential Commercial

Other / Additional Details: _____

4. We would like to hear your views on the project at this stage:

This can include your opinion on the:

- Need for the project;
- Possible routes that should be considered;
- Locations, attractions or facilities in your locality that could be attractive to greenway users, or would benefit from a greenway, constraints or barriers to a greenway in your area;
- Any concerns or issues you may have at this stage.



An Roinn Iompair
Department of Transport



